

## SZG507M remote monitoring led street light



### Applications:

SZG507M remote monitoring led street light is widely used as lighting and remote security monitoring by wifi or 4G internet online in the followings.

- urban main roads, secondary roads
- county, township, town, village road
- industrial and mining plant road
- tourist attractions and resort road
- park, parking roads
- villas and high-end residential roads

### Description of performances:

#### ❖ **Built-in 1080P HD camera**

- 1080P resolution and 2 million pixels
- infrared night vision increased for clear video at night
- no missing any corner by means of 360° horizontal cloud platform
- H.265 video coding to save more storage space
- intelligent detection, sound alarm and picture push
- support multi-terminal remote viewing(windows, android, apple)
- automatic cycle video
- wifi or 4G for remote monitoring



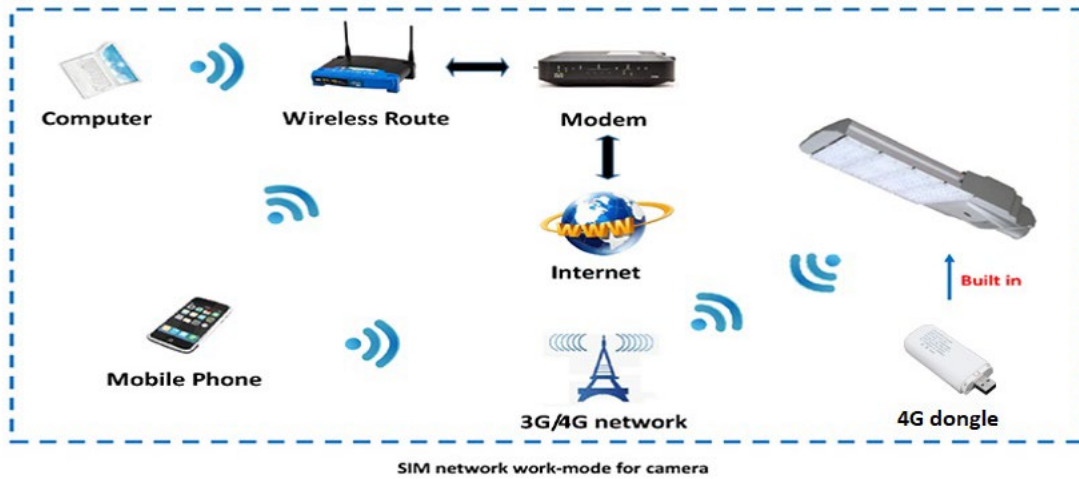
#### ❖ **Super brightness Philips led chip**

- led chip luminous efficiency: 190 lm/W @30mA
- light efficiency of luminaire:  $\geq 150$  lm/W
- The thermal resistance is only 6°C and 50% lower
- The illuminance is 20% higher
- average service life:  $\geq 100,000$  hours
- no blue light hazard

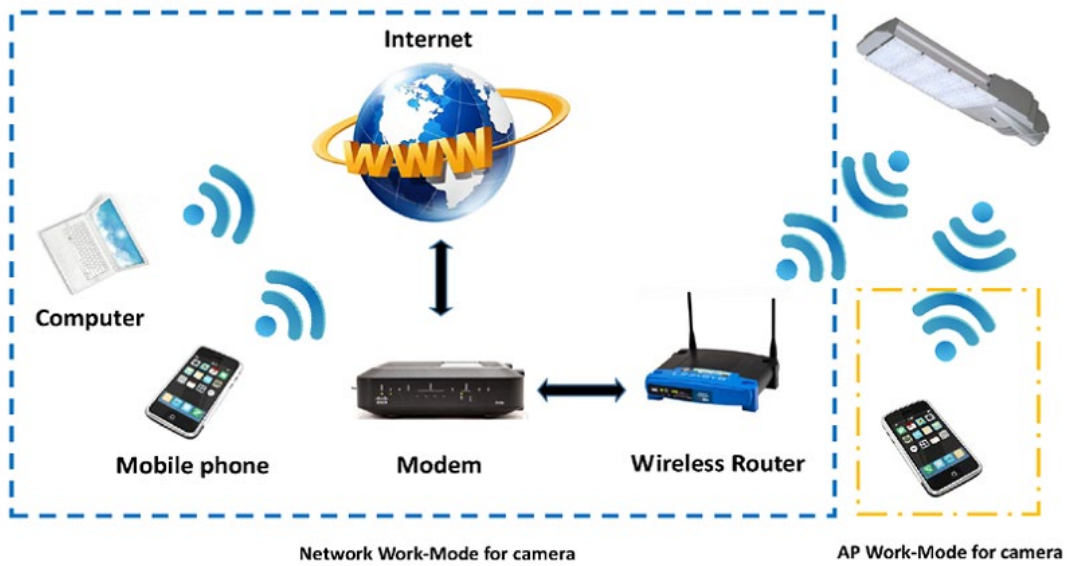
#### ❖ **Power lithium ion battery**

- cycle life:  $\geq 1000$  cycles for more than 3 years' use
- battery capacity:  $\geq 30$ Wh
- High temperature discharge efficiency is over 95%.
- Low temperature discharge efficiency is about 70%.








## SIM card(4G dongle) remote network work-mode:

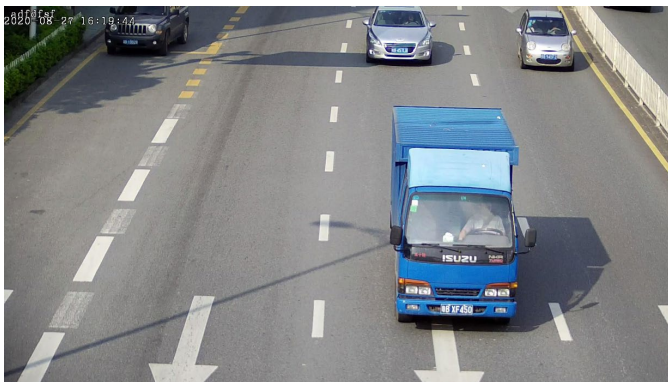


## Wifi remote network work-mode and AP work-mode:



### Comparison with CCTV camera:

 SZG507M remote monitoring led street light with wifi/4G	No need	Communication optical cable 	Need	 CCTV monitor camera
	No need	Electric power cable 	Need	
	No need	Monitoring center 	Need	
	No need	Monitoring system storage room 	Need	
	Yes	Cryptic camera 	No	



## Technical parameters:

Items	100W	150W
Input working voltage (V)	220 Vac	220 Vac
Total power of luminaire (W)	100	150
Power efficiency	90%	90%
Power factor	0.95	0.95-0.98
Lightning surge protection (V)	6000	6000
Total harmonic distortion	≤15%	≤15%
Brand of led chips	Philips	Philips
Quantity of led chips (Pcs)	112	168
Luminous efficiency (lm/W)	190	190
Total luminous flux (lm)	18000±5%	27000±5%
Light efficiency of luminaire (lm/W)	150	150
Correlated color temperature (K)	3000~6500	3000~6500
Color Rendering Index (Ra)	75	75
Beam angle (°)	140° *70° (Polarized light)	140° *70° (Polarized light)
Period of operational hours (h)	100,000	100,000
Housing material	Aluminum	aluminum
Optical cover material	PC	PC
High definition video	1080P	1080P
TF card capacity (G)	128G (max)	128G (max)
Stored days of data (d)	~30	~30
Angle of camera lens (°)	120°	120°
Operation time of camera (hrs/d)	24	24
Battery for powering camera	Li-battery	Li-battery
Video format	avi	avi
Communication mode for remote monitor	WiFi/Internet/GPRS/CDMA	WiFi/Internet/GPRS/CDMA
Monitoring mode	Remote online monitor/AP mode	Remote online monitor/AP mode
Operating control mode	APP of mobile phone/computer	APP of mobile phone/computer
Operating system of mobile	IOS system/Android system	IOS system/Android system
Working temperature (°C)	-30~+55°C	-30~+55°C
IP protection	IP65/IP67	IP65/IP67
Power supply	Built-in	Built-in
Dimensions (mm)	495*300*90	575*300*90
Weight (Kg)	6.5	7.5
Installation (mm)	φ 60	φ 60