

XQL300B explosionproof led street light



Applications:

- oil enterprise road
- chemical enterprises road
- oil depot road
- gas station road
- filling station roads
- pharmaceutical enterprises road
- other flammable and explosive sites

Description of performances:

explosionproof marking ATEX certification III G Ex nA IIC T5 Gc	application zone Zone 2	brand of led chip PHILIPS	luminous efficiency for led $\geq 190 \text{ lm/W}$	led driver Meanwell led driver	wide voltage input 90~305 Vac
power efficiency $\geq 91\%$	power factor 0.98	surge lightning protection 6000V	beam angle 120°	shell material ADC12 die-cast aluminum	IP protection IP65

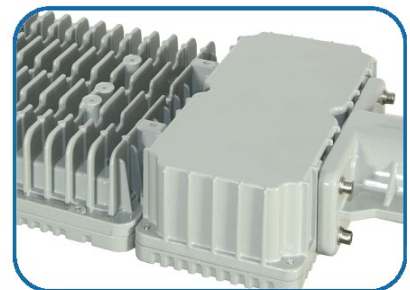
Product details:



Philips led chip & nano reflector
 $\geq 190 \text{ lm/W}$



separate power supply cavity
low temperature, long lifespan



ADC12 die-cast aluminum shell

Technical parameters:

Parameter items	100W	150W	200W
Input voltage (V)	90-305Vac	90-305Vac	90-305Vac
Power efficiency	91%	91%	91%
Power factor	≥0.95	≥0.95	≥0.95
Surge lightning protection (V)	6000	6000	6000
Total harmonic distortion	≤10%	≤10%	≤10%
Brand of led chip	Philips	Philips	Philips
Quantity of led chip (pcs)	180	180	280
Luminous efficiency for led (lm/W)	200	190	190
Total luminous flux (lm)	20,000±5%	28,500±5%	38,000±5%
Light efficiency for luminaire (lm/W)	150	150	150
Correlated color temperature (K)	3000-6500	3000-6500	3000-6500
Color rendering index (Ra)	≥75	≥75	≥75
Beam angle (°)	120°	120°	120°
LED lifespan (h)	100,000	100,000	100,000
Working temperature (°C)	-30~+50°C	-30~+50°C	-30~+50°C
IP protection	IP65	IP65	IP65
Quantity of modular (Pcs)	/	/	/
Installation mode of led driver	built-in	built-in	built-in
Dimensions (mm)	595*245*70	595*245*70	6555*280*70
Weight (Kg)	7.7	7.9	10.5
Mounting mode	Φ60mm	Φ60mm	Φ60mm

