

SZG503A series of led street light



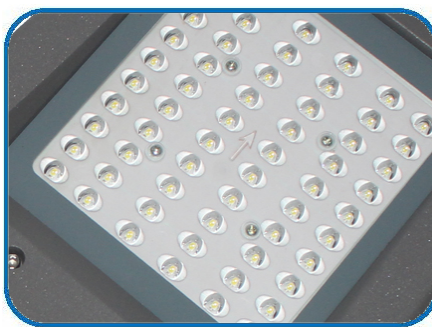
Applications:

- Urban main roads and secondary trunk roads and auxiliary street lamps
- county, township and town roads
- high-tech park street lamp
- economic development zone
- factory street lamps
- park, parking roads
- residential district road

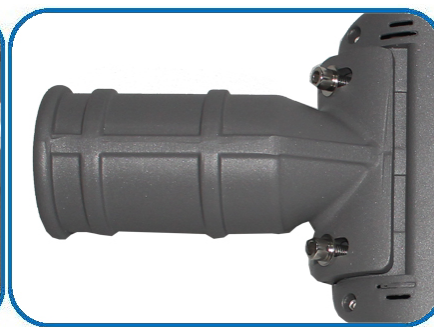
Description of performances:

| | | | | | |
|---------------------------|-------------------------------|--------------------------------|-------------------------------------|----------------------------|----------------------------|
| brand of led chip | luminous efficacy of led chip | luminous efficacy of luminaire | brand of led driver | wide input voltage | power factor |
| PHILIPS | 210 lm/W | 155 lm/W | Inventronics /Sosen | 90~305 Vac | ≥0.95 |
| total harmonic distortion | surge lightning protection | adjustable angle | opening mode for power cavity | light sensor | material of shell |
| ≤10% | 6000 KV | adjustable | rear cover opening easy to maintain | NEMA light sensor optional | ADC12 die-casting aluminum |

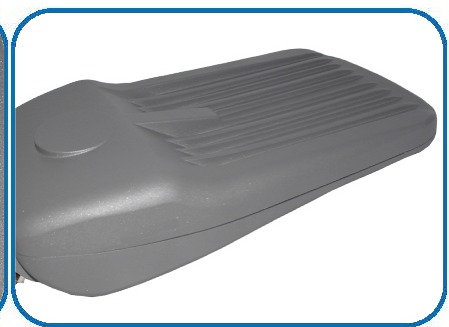
Product details:



Philips super bright led chip/lens



adjustable tile (90° flip)



streamlined shell and radiating rib to reduce dust accumulation

Technical parameters:

| Parameter items | 50W | 100W | 150W | 200W |
|---------------------------------------|---------------------|---------------------|---------------------|---------------------|
| Input voltage (V) | 90-305Vac | 90-305Vac | 90-305Vac | 90-305Vac |
| Power efficiency | 91% | 91% | 91% | 91% |
| Power factor | ≥0.95 | ≥0.95 | ≥0.95 | ≥0.95 |
| Surge lightning protection (V) | 6000 | 6000 | 6000 | 6000 |
| Total harmonic distortion | ≤10% | ≤10% | ≤10% | ≤10% |
| Brand of led chip (pcs) | Philips | Philips | Philips | Philips |
| Luminous efficiency for led (lm/W) | 210 | 210 | 210 | 210 |
| Total luminous flux (lm) | 10500±5% | 21000±5% | 31500±5% | 42000±5% |
| Light efficiency for luminaire (lm/W) | 155 | 155 | 155 | 155 |
| Correlated color temperature (K) | 3000-6500 | 3000-6500 | 3000-6500 | 3000-6500 |
| Color rendering index (Ra) | ≥75 | ≥75 | ≥75 | ≥75 |
| Beam angle (°) | 140° *70° | 140° *70° | 140° *70° | 140° *70° |
| LED lifespan (h) | 100,000 | 100,000 | 100,000 | 100,000 |
| Working temperature (°C) | -40~+55°C | -40~+55°C | -40~+55°C | -40~+55°C |
| IP protection | IP66 | IP66 | IP66 | IP66 |
| IK protection | IK08 | IK08 | IK08 | IK08 |
| Led driver | Trismart led driver | Trismart led driver | Trismart led driver | Trismart led driver |
| Installation mode of led driver | built-in | built-in | built-in | built-in |
| Opening mode for power cavity | opening rear cover | opening rear cover | opening rear cover | opening rear cover |
| NEMA light sensor | optional | optional | optional | optional |
| Dimensions (mm) | 485*210*70 | 540*240*102 | 605*278*105 | 697*312*112 |
| Weight (Kg) | 2.5 | 3.0 | 4.6 | 5.5 |
| Installation of pipe diameter (mm) | Φ60 | Φ60 | Φ60 | Φ60 |
| Warranty | 3 years | 3 years | 3 years | 3 years |

Test report of luminous efficiency of led chip:

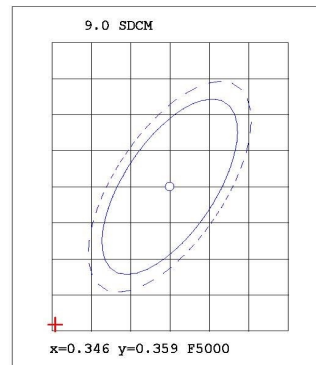
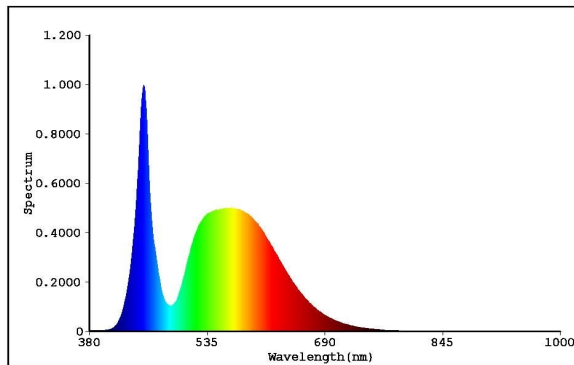
EVERFINE 远方

Test report

EVERFINE LEDspec Test Report

2 Of 4

Spectrum Test Report



Color Parameters:

Chromaticity Coordinate(2Deg): $x=0.3314$ $y=0.3399$ / $u'=0.2066$ $v'=0.4768$ $duv=-1.324e-004$

Tc=5545K Dominant WL:Ld=536.9nm Purity=1.5%

Ratio:R=14.1% G=82.3% B=3.7% Peak WL:Lp=451.4nm HWL:19.7nm

Render Index:Ra=75.7

R1 =74.64 R2 =79.78 R3 =80.99 R4 =76.68 R5 =74.83

R6 =71.19 R7 =83.59 R8 =63.76 R9 =-11.12 R10=49.49

R11=73.52 R12=44.41 R13=75.32 R14=89.03 R15=71.15

TM30 Parameters: Rf = 72.8, Rg:94.9

Photo Parameters:

Flux = 143.7 lm Eff. : 208.44 lm/W Fe = 440.0 mW

Electrical parameters:

VF = 5.750 V IF = 119.9 mA P = 689.4 mW Ch1

LEVEL:** [OUT] WHITE:ANSI_5700K

Status: T=140.00ms Ip=47130 (72%) [HAAS1200_V1_USB] V2.00.288

Model:120MA
 Tester:D.U.01.0151 24V
 Temperature:25.3Deg
 Manufactory:EVERFINE
 Assessor:damin
 System:WY + HAAS1200_V1_USB

Number:3
 Date:2021-06-05 16-40
 Humidity:65.0%
 Remarks:---