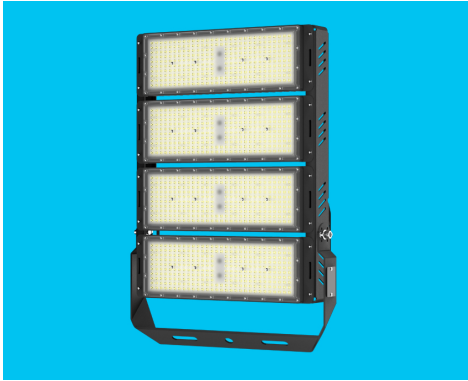


# SZG326 high power led floodlight



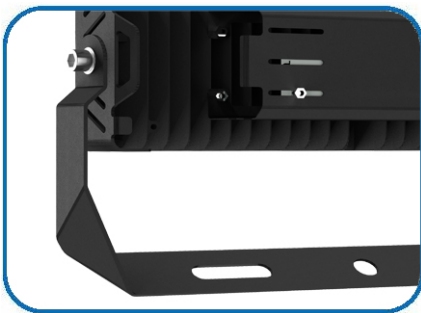
## Applications:

- Factory buildings and production workshops
- Cargo shed, coal shed, warehouse, equipment room
- High pole lights: highway overpasses, urban road intersections, port and dock freight yards, highway service areas, oil depots and tank farms, railway freight transfer yards, light bridges and lighthouses, etc
- Outdoor equipment area and work area
- City square and enterprise square
- Crane, shore crane, gantry crane, etc

## Description of performances:

brand of led chip	luminous efficiency for led	light efficiency of luminaire	led driver power supply	wide input voltage	power efficiency
<b>PHILIPS</b>	≥210 lm/W	160 lm/W	Inventronics led driver	90~305 Vac	≥91%
power factor	surge lightning protection	total harmonic distortion	beam angle	shell material	IP protection
≥0.95	6000V	≤10%	90°	ADC12 die-cast aluminum	IP66

## Product details:



U-bracket with strong vibration resistance



precision die-casting aluminum heat dissipation module

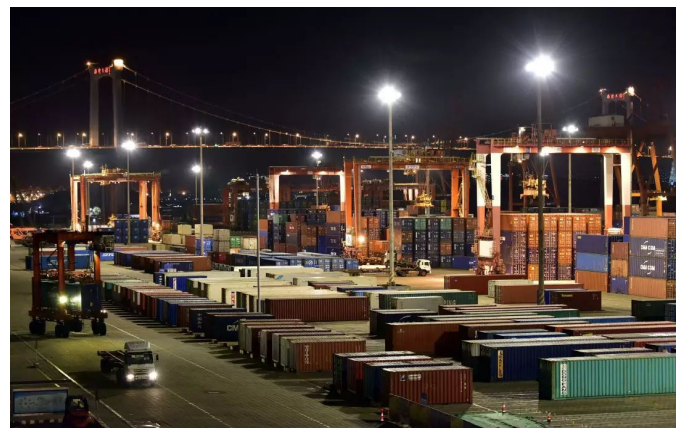
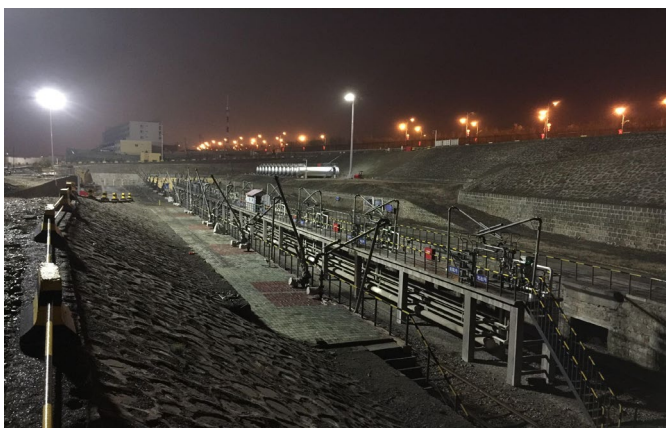


external convection+conduction heat dissipation power box

## Technical parameters:

Parameter items	250W	500W	750W	1000W
Input voltage (V)	90-305Vac	90-305Vac	90-305Vac	90-305Vac
Power efficiency	91%	91%	91%	91%
Power factor	≥0.95	≥0.95	≥0.95	≥0.95
Surge lightning protection (V)	6000	6000	6000	6000
Total harmonic distortion	≤10%	≤10%	≤10%	≤10%
Brand of led chips	Philips	Philips	Philips	Philips
Quantity of led chip (pcs)	288	576	864	1152
Luminous efficiency for led (lm/W)	≥210	≥210	≥210	≥210
Total luminous flux (lm)	50000±5%	100000±5%	150000±5%	200000±5%
Light efficiency for luminaire (lm/W)	160	160	160	160
Correlated color temperature (K)	3000-6500	3000-6500	3000-6500	3000-6500
Color rendering index (Ra)	75	75	75	75
Beam angle (°)	90°	90°	90°	90°
LED lifespan (h)	100,000	100,000	100,000	100,000
LoRaWAN intelligent control	optional	optional	optional	optional
NB-IoT intelligent control	optional	optional	optional	optional
Working temperature (°C)	-40~+50°C	-40~+50°C	-40~+50°C	-40~+50°C
IP protection	IP66	IP66	IP66	IP66
Module angle adjustable	1	2	3	4
Mounting of led driver	external	External	External	external
Dimensions (mm)	495*279*108	495*438*108	495*603*108	495*757*108
Weight (Kg)	7	11	14	17
Mounting mode	U-bracket	U-bracket	U-bracket	U-bracket
Warranty	5 year	5 year	5 year	5 year

**Note:** The maximum power of each module is 250W, and other powers are optional.



## Test report of luminous efficiency of led chip:

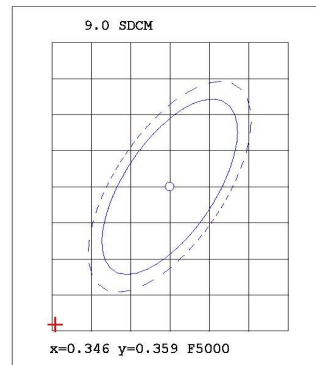
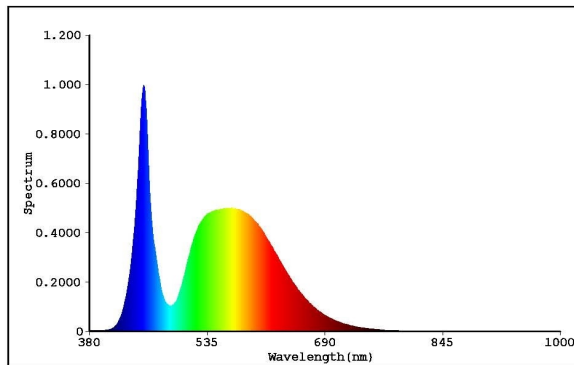
**EVERFINE** 远方

Test report

EVERFINE LEDspec Test Report

2 Of 4

### Spectrum Test Report



#### Color Parameters:

Chromaticity Coordinate(2Deg): $x=0.3314$   $y=0.3399$ / $u'=0.2066$   $v'=0.4768$   $duv=-1.324e-004$

Tc=5545K Dominant WL:Ld=536.9nm Purity=1.5%

Ratio:R=14.1% G=82.3% B=3.7% Peak WL:Lp=451.4nm HWL:19.7nm

Render Index:Ra=75.7

R1 =74.64      R2 =79.78      R3 =80.99      R4 =76.68      R5 =74.83

R6 =71.19      R7 =83.59      R8 =63.76      R9 =-11.12      R10=49.49

R11=73.52      R12=44.41      R13=75.32      R14=89.03      R15=71.15

TM30 Parameters: Rf = 72.8, Rg:94.9

#### Photo Parameters:

Flux = 143.7 lm    Eff. : 208.44 lm/W    Fe = 440.0 mW

#### Electrical parameters:

VF = 5.750 V      IF = 119.9 mA      P = 689.4 mW Ch1

LEVEL:\*\* [OUT]      WHITE:ANSI\_5700K

Status: T=140.00ms Ip=47130 (72%) [ HAAS1200\_V1\_USB ] V2.00.288

Model:120MA  
 Tester:D.U.01.0151 24V  
 Temperature:25.3Deg  
 Manufactory:EVERFINE  
 Assessor:damin  
 System:WY + HAAS1200\_V1\_USB

Number:3  
 Date:2021-06-05 16-40  
 Humidity:65.0%  
 Remarks:---