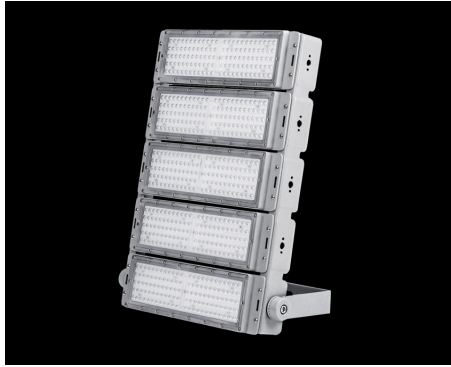


SZG301 series of high power led floodlight



Applications:

- industrial and mining enterprises large-scale plant, workshop, warehouse, equipment room, etc.
- high pole lights: highway overpasses, urban road junctions, port terminal freight yards, highway service areas, oil depots and oil tanks, railway freight forwarders, lamp bridges and lighthouses, etc.
- city square, enterprise square
- large parking lot
- indoor and outdoor sports venues
- driving, shore crane, gantry crane, etc.

Description of performances:

brand of led chip	luminous efficiency for led	luminous efficacy for luminaire	led driver	wide voltage input	power efficiency
PHILIPS	≥200 lm/W	≥155 lm/W	Inventronics led driver	90~305 Vac	≥91%
power factor	surge lightning protection	total harmonic distortion	beam angle	shell material	IP protection
≥0.95	6000V	≤10%	30°/60°/90° /145°*70°	ADC12 die-cast aluminum	IP66

Product details:



Dial for adjusting bracket



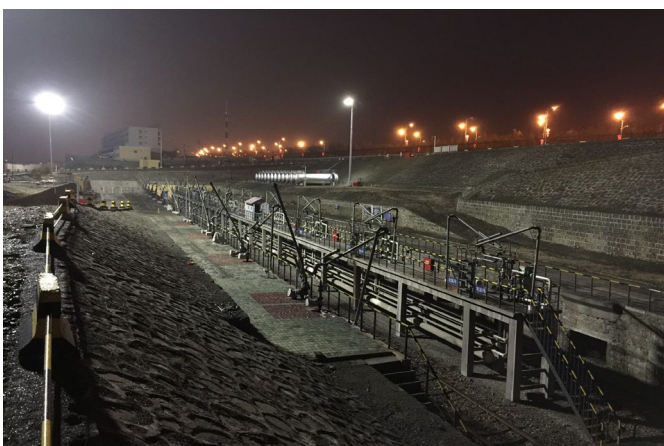
ADC12 die-cast aluminum heat dissipation module



Meanwell led driver

Technical parameters:

Parameter items	100W	200W	300W	400W	500W	600W
Input voltage (V)	90-305Vac	90-305Vac	90-305Vac	90-305Vac	90-305Vac	90-305Vac
Power efficiency	91%	91%	91%	91%	91%	91%
Power factor	≥0.95	≥0.95	≥0.95	≥0.95	≥0.95	≥0.95
Surge lightning protection (V)	6000	6000	6000	6000	6000	6000
Total harmonic distortion	≤10%	≤10%	≤10%	≤10%	≤10%	≤10%
Brand of led chip	Philips	Philips	Philips	Philips	Philips	Philips
Quantity of led chip (pcs)	120	240	360	480	600	720
Luminous efficiency for led (lm/W)	≥200	≥200	≥200	≥200	≥200	≥200
Total luminous flux (lm)	20000±5%	40000±5%	60000±5%	80000±5%	100000±5%	120000±5%
Light efficiency for luminaire (lm/AW)	≥155	≥155	≥155	≥155	≥155	≥155
Correlated color temperature (K)	3000-6500	3000-6500	3000-6500	3000-6500	3000-6500	3000-6500
Color rendering index (Ra)	≥75	≥75	≥75	≥75	≥75	≥75
Beam angle (°)	30°/60°/90°/145°*70°	30°/60°/90°/145°*70°	30°/60°/90°/145°*70°	30°/60°/90°/145°*70°	30°/60°/90°/145°*70°	30°/60°/90°/145°*70°
LED lifespan (h)	100,000	100,000	100,000	100,000	100,000	100,000
Brand of led driver	Meanwell	Meanwell	optional	Meanwell	Meanwell	Meanwell
Installation mode of led driver	external	external	external	external	external	external
Working temperature (°C)	-40~+50°C	-40~+50°C	-40~+50°C	-40~+50°C	-40~+50°C	-40~+50°C
IP protection	IP66	IP66	IP66	IP66	IP66	IP66
Quantity of modular (Pcs)	1	2	3	4	5	6
Dimensions (mm)	400*100*180	400*205*180	400*305*180	400*405*180	400*505*180	400*605*180
Weight (Kg)	3.0	4.0	5.0	6.0	7.0	8.0
Mounting mode	U-bracket	U-bracket	U-bracket	U-bracket	U-bracket	U-bracket
Warranty	5 years	5 years	5 years	5 years	5 years	5 years



Test report of luminous efficiency of led chip:

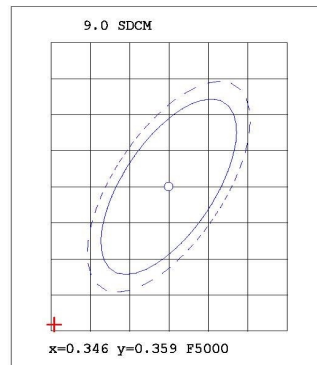
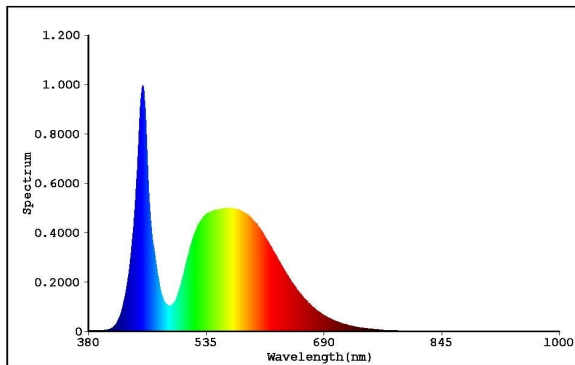
EVERFINE 远方

Test report

EVERFINE LEDspec Test Report

2 Of 4

Spectrum Test Report



Color Parameters:

Chromaticity Coordinate(2Deg): $x=0.3314$ $y=0.3399$ / $u'=0.2066$ $v'=0.4768$ $duv=-1.324e-004$

Tc=5545K Dominant WL:Ld=536.9nm Purity=1.5%

Ratio:R=14.1% G=82.3% B=3.7% Peak WL:Lp=451.4nm HWL:19.7nm

Render Index:Ra=75.7

R1 =74.64 R2 =79.78 R3 =80.99 R4 =76.68 R5 =74.83

R6 =71.19 R7 =83.59 R8 =63.76 R9 =-11.12 R10=49.49

R11=73.52 R12=44.41 R13=75.32 R14=89.03 R15=71.15

TM30 Parameters: Rf = 72.8, Rg:94.9

Photo Parameters:

Flux = 143.7 lm Eff. : 208.44 lm/W Fe = 440.0 mW

Electrical parameters:

VF = 5.750 V IF = 119.9 mA P = 689.4 mW Ch1

LEVEL:** [OUT] WHITE:ANSI_5700K

Status: T=140.00ms Ip=47130 (72%) [HAAS1200_V1_USB] V2.00.288

Model:120MA
 Tester:D.U.01.0151 24V
 Temperature:25.3Deg
 Manufactory:EVERFINE
 Assessor:damin
 System:WY + HAAS1200_V1_USB

Number:3
 Date:2021-06-05 16-40
 Humidity:65.0%
 Remarks:---