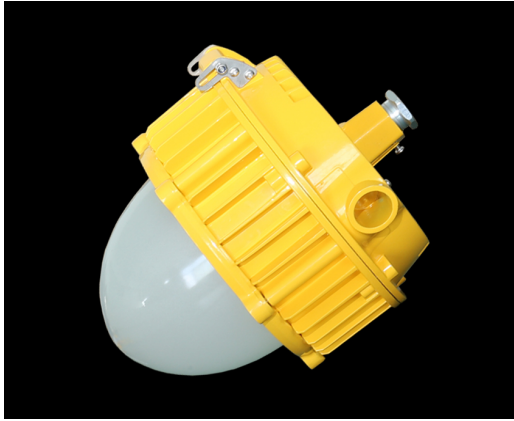


# SZG202C led explosionproof platform lamp(emergency)



## Applications:

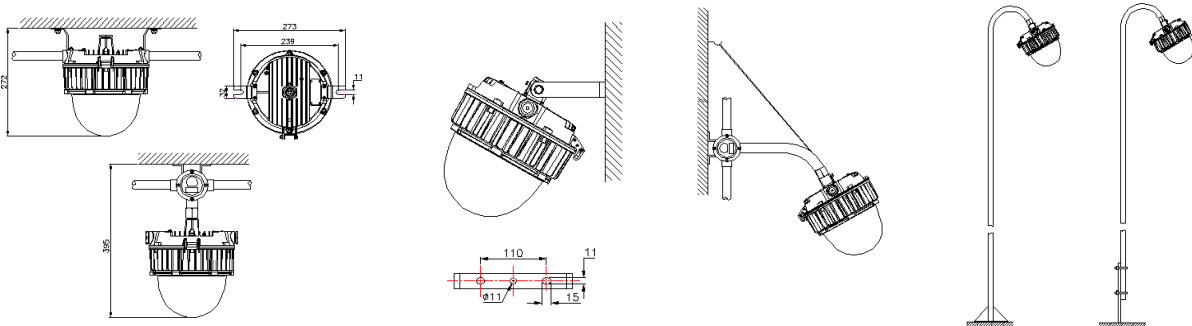
It can be used as both normal illumination and emergency illumination with built-in lithium ion battery.

- petrochemical plant platform
- oilfield drilling platform
- oil depots, gas stations, filling stations
- pharmaceutical chemical, fine chemical, organic chemical and other enterprises explosionproof places
- explosionproof street lamps
- explosionproof tunnel lights
- explosionproof passageway lights

## Description of performances:

<b>explosionproof marking</b> ATEX certification II G Ex d IIC T6 Gb	<b>application zone</b> Zone 1 Zone 2	<b>brand of led chip</b> <b>PHILIPS</b>	<b>luminous efficiency for led</b> 200 lm/W	<b>luminous efficacy for luminaire</b> 150 lm/W	<b>competitive energy saving rate</b> 20%~30%
<b>emergency mode</b> illumination emergency	<b>type of battery</b> lithium ion battery	<b>emergency time</b> ≥90min	<b>shell material</b> ADC12 die-cast aluminum shell	<b>IP protection</b> IP66	<b>Mounting mode</b> G3/4 pipe U-bracket

## Mounting modes and dimensions:



## Technical parameters:

Parameter items	55W
Input voltage (V)	90-305Vac
Rated power (W)	55W (normal illumination) /5W (emergency illumination)
Emergency mode	illumination emergency
Emergency time (minute)	≥90
Brand of led chip	Philips
Luminous efficiency for led (lm/W)	200
Light efficiency for luminaire (lm/W)	150
Correlated color temperature (K)	3000-6500
Color rendering index (Ra)	≥75
Beam angle (°)	120°
LED lifespan (h)	100,000
Working temperature (°C)	-20~+40°C
IP protection	IP66
Brand of led driver	Trismart Lighting driver
Installation mode of led driver	built-in
Dimensions (mm)	φ210*255
Weight (Kg)	4
Mounting mode	G3/4 pipe /U-bracket

