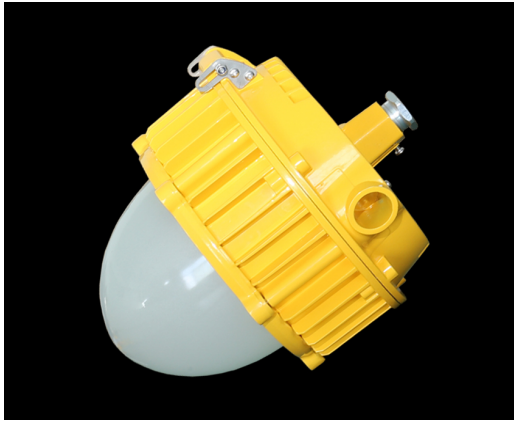


# SZG202C led explosionproof platform lamp



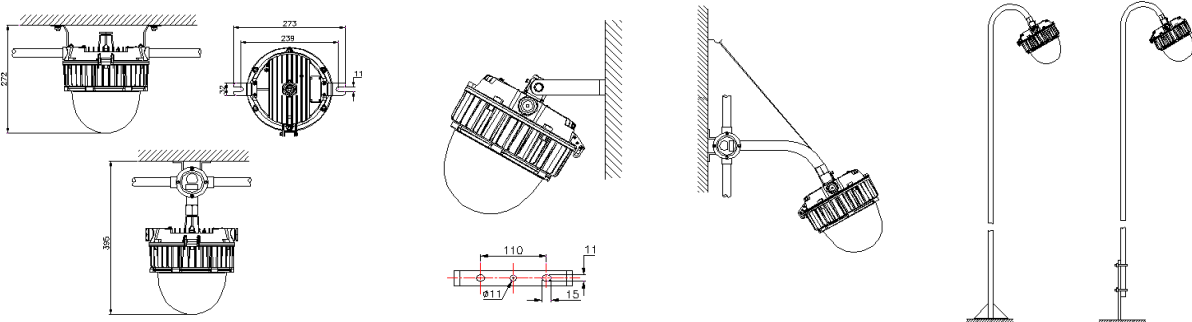
## Applications:

- petrochemical plant platform
- oilfield drilling platform
- oil depots, gas stations, filling stations
- pharmaceutical chemical, fine chemical, organic chemical and other enterprises explosionproof places
- explosionproof street lamps
- explosionproof tunnel lights
- explosionproof passageway lights

## Description of performances:

<b>explosionproof marking</b> ATEX certification II G Ex d IIC T6 Gb	<b>application zone</b> Zone 1 Zone 2	<b>brand of led chip</b> <b>PHILIPS</b>	<b>luminous efficiency for led</b> 200 lm/W	<b>luminous efficacy for luminaire</b> 150 lm/W	<b>competitive energy saving rate</b> 20%~30%
<b>led driver</b> Trismart led driver	<b>wide voltage input</b> 90~305 Vac	<b>power factor</b> $\geq 0.95$	<b>shell material</b> ADC12 die-cast aluminum shell	<b>IP protection</b> IP66	<b>mounting mode</b> G3/4 pipe U-bracket

## Mounting modes and dimensions:



## Technical parameters:

Parameter items	55W	65W	75W
Input voltage (V)	90-305Vac	90-305Vac	90-305Vac
Power efficiency	≥91%	≥91%	≥91%
Power factor	≥0.95	≥0.95	≥0.95
Brand of led chip	Philips	Philips	Philips
Luminous efficiency for led (lm/W)	200	200	200
Light efficacy for luminaire (lm/W)	150	150	150
Correlated color temperature (K)	3000-6500	3000-6500	3000-6500
Color rendering index (Ra)	≥75	≥75	≥75
Beam angle (°)	120°	120°	120°
LED lifespan (h)	100,000	100,000	100,000
Working temperature (°C)	-40~+40°C	-40~+40°C	-40~+40°C
IP protection	IP66	IP66	IP66
Brand of led driver	Trismart Lighting driver	Trismart Lighting driver	Trismart Lighting driver
Installation mode of led driver	built-in	built-in	built-in
Dimensions (mm)	φ210*255	φ210*255	φ210*255
Weight (Kg)	4	4	4
Mounting mode	G3/4 pipe /U-bracket	G3/4 pipe /U-bracket	G3/4 pipe /U-bracket

