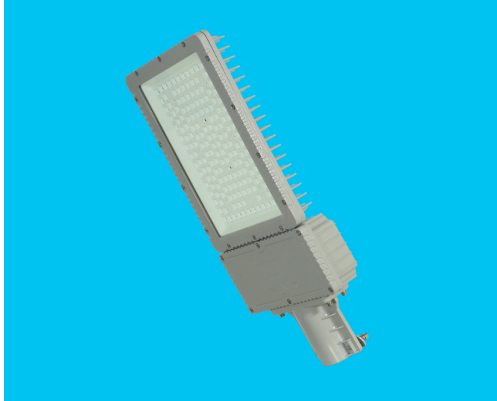


XQL300B explosionproof led street light



Applications:

- oil enterprise road
- chemical enterprises road
- oil depot road
- gas station road
- filling station roads
- pharmaceutical enterprises road
- other flammable and explosive sites

Description of performances:

explosionproof marking ATEX certification II G Ex d IIC T6 Gb	application zone Zone 1 Zone 2	brand of led chip PHILIPS	luminous efficiency for led 210-220 lm/W	led driver Inventronics led driver	wide voltage input 90~305 Vac
power efficiency ≥91%	power factor 0.98	surge lightning protection 6000V	beam angle 120°	shell material ADC12 die-cast aluminum	IP protection IP65

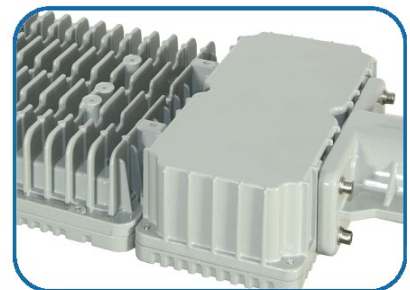
Product details:



Philips led chip & nano reflector
≥210 lm/W



separate power supply cavity
low temperature, long lifespan



ADC12 die-cast aluminum shell

Technical parameters:

Parameter items	100W	150W	200W
Input voltage (V)	90-305Vac	90-305Vac	90-305Vac
Power efficiency	91%	91%	91%
Power factor	≥0.95	≥0.95	≥0.95
Surge lightning protection (V)	6000	6000	6000
Total harmonic distortion	≤10%	≤10%	≤10%
Brand of led chip	Philips	Philips	Philips
Quantity of led chip (pcs)	180	180	280
Luminous efficiency for led (lm/W)	220	210	210
Total luminous flux (lm)	22,000±5%	31,500±5%	42,000±5%
Light efficiency for luminaire (lm/W)	165	160	160
Correlated color temperature (K)	3000-6500	3000-6500	3000-6500
Color rendering index (Ra)	≥75	≥75	≥75
Beam angle (°)	120°	120°	120°
LED lifespan (h)	100,000	100,000	100,000
Working temperature (°C)	-40~+50°C	-40~+50°C	-40~+50°C
IP protection	IP65	IP65	IP65
Quantity of modular (Pcs)	/	/	/
Installation mode of led driver	built-in	built-in	built-in
Dimensions (mm)	595*245*70	595*245*70	6555*280*70
Weight (Kg)	7.7	7.9	10.5
Mounting mode	Φ60mm	Φ60mm	Φ60mm



Test report of luminous efficiency of led chip:

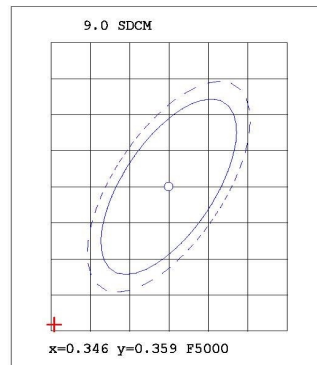
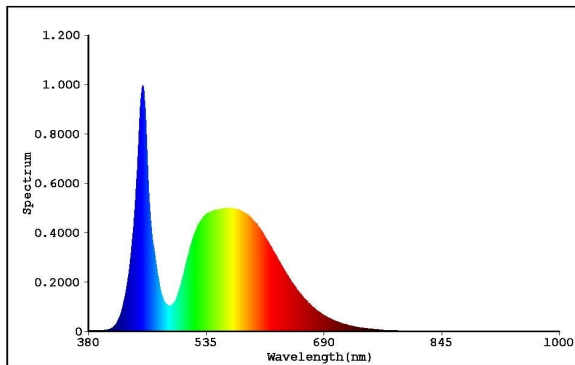
EVERFINE 远方

Test report

EVERFINE LEDspec Test Report

2 Of 4

Spectrum Test Report



Color Parameters:

Chromaticity Coordinate(2Deg): $x=0.3314$ $y=0.3399$ / $u'=0.2066$ $v'=0.4768$ $duv=-1.324e-004$

Tc=5545K Dominant WL:Ld=536.9nm Purity=1.5%

Ratio:R=14.1% G=82.3% B=3.7% Peak WL:Lp=451.4nm HWL:19.7nm

Render Index:Ra=75.7

R1 =74.64 R2 =79.78 R3 =80.99 R4 =76.68 R5 =74.83

R6 =71.19 R7 =83.59 R8 =63.76 R9 =-11.12 R10=49.49

R11=73.52 R12=44.41 R13=75.32 R14=89.03 R15=71.15

TM30 Parameters: Rf = 72.8, Rg:94.9

Photo Parameters:

Flux = 143.7 lm Eff. : 208.44 lm/W Fe = 440.0 mW

Electrical parameters:

VF = 5.750 V IF = 119.9 mA P = 689.4 mW Ch1

LEVEL:** [OUT] WHITE:ANSI_5700K

Status: T=140.00ms Ip=47130 (72%) [HAAS1200_V1_USB] V2.00.288

Model:120MA
 Tester:D.U.01.0151 24V
 Temperature:25.3Deg
 Manufactory:EVERFINE
 Assessor:damin
 System:WY + HAAS1200_V1_USB

Number:3
 Date:2021-06-05 16-40
 Humidity:65.0%
 Remarks:---